

Course Change Request

New Course Proposal

Date Submitted: 09/13/21 6:40 pm

Viewing: **NEUR 632 : Glutamatergic Systems**

Last edit: 09/23/21 11:41 am

Changes proposed by: gscott21

Are you completing this form on someone else's behalf?

Yes

Requestor:

Name	Extension	Email
Greta Ann Herin	3-2890	gherin@gmu.edu

Effective Term: Spring 2022

Subject Code: NEUR - Neuroscience

Course Number: 632

Bundled Courses:

Is this course replacing another course? No

Equivalent Courses:

Catalog Title: Glutamatergic Systems

Banner Title: Glutamatergic Systems

Will section titles vary by semester? No

Credits: 3

Schedule Type: Lecture

In Workflow

1. **NEUR Chair**

2. **SC Curriculum Committee**

3. SC Associate Dean

4. Assoc Provost-Graduate

5. Registrar-Courses

6. Banner

Approval Path

1. 09/14/21 9:18 am

Saleet Jafri (sjafri):

Approved for NEUR Chair

Hours of Lecture or Seminar per week: 3

Repeatable: May only be taken once for credit, limited to 2 attempts (N2) **Max Allowable Credits:** 6

Default Grade Mode: Graduate Regular

Recommended Prerequisite(s):

Recommended Corequisite(s):

Required Prerequisite(s) / Corequisite(s) (Updates only):

Registrar's Office Use Only - Required Prerequisite(s)/Corequisite(s):

And/Or	(Course/Test Code	Min Grade/Score	Academic Level)	Concurrency?

Registration Restrictions (Updates only):

Graduate status only

Registrar's Office Use Only - Registration Restrictions:

Field(s) of Study:

Class(es):

Level(s):

Degree(s):

School(s):

Catalog Description:

A survey of molecular and clinical neuroscience from the perspective of glutamatergic systems. This course will use the reading of primary scientific literature to guide students to learn a variety of neural systems, methods in neuroscience, and levels of analysis. Students at the graduate level will gain extensive experience in critiquing a variety of scientific papers.

Justification:

This course is running regularly and is popular with graduate students for its development of literature critique skills and survey of experimental neuroscience.

Does this course cover material which crosses into another department? No

Learning Outcomes:

Describe the historical discoveries of glutamate as a neurotransmitter and current thinking about glutamatergic neurotransmission.

2. Describe the biochemical and cellular systems that manufacture, transport, and receive glutamate, with emphasis on the diversity of glutamate receptors

Become more proficient at reading primary literature including comprehension of scientific terminology, graph

interpretation, statistical reasoning, and distinction between description and conjecture.

4. Communicate effectively to others the purpose, contexts, methods, weaknesses and strengths of primary neuroscientific literature.

5. Contextualize individual studies in light of the current body of knowledge.

6. Identify current gaps in the literature and predict elegant studies to address them (particularly NEUR 632)

Attach Syllabus

[NEUR 632 2021 Herin Syllabus Curriculum Committee.pdf](#)

Additional Attachments**Staffing:**

Greta Ann Herin

Relationship to Existing Programs:

N/A

Relationship to Existing Courses:

Crosslisted with NEUR 422

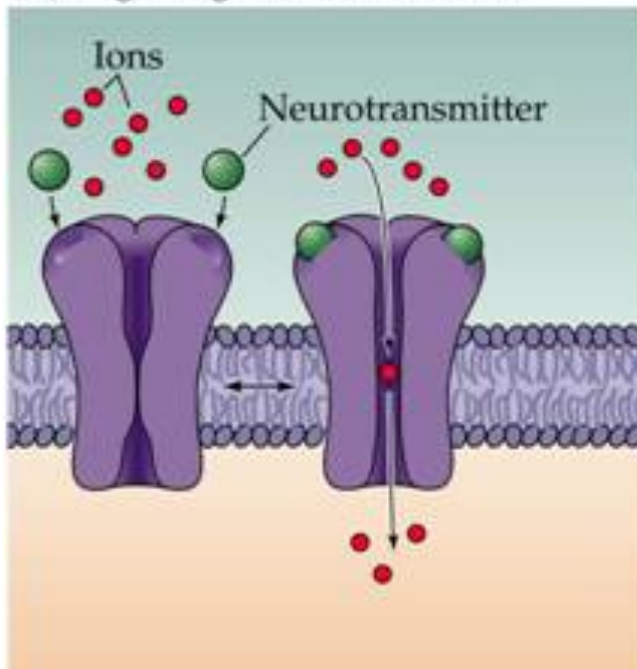
Additional Comments:

Reviewer
Comments

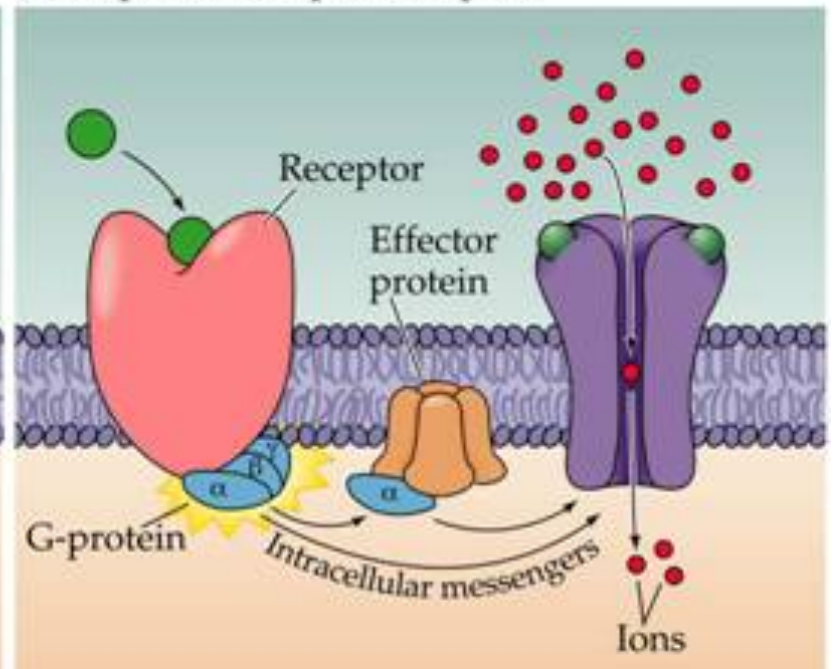
Key: 17301

Glutamatergic Systems (NEUR 632)

(A) Ligand-gated ion channels



(B) G-protein-coupled receptors



George Mason University

Fall 2021

Mondays 10:30am - 1:10pm Research Hall 201, Fairfax Campus.

Face-to-face small group discussion.

Instructor: Greta Ann Herin, Ph.D. Term Associate Professor, Interdisciplinary Program in Neuroscience. Office: Krasnow 255 Office phone (703) 993-9720.

E-mail: gherin@gmu.edu (Please use your gmu.edu e-mail for all university business including contacting me) Office hours: Wed 11am-1pm, Fri 10am-12pm, and by appointment, virtually or in-person. Course materials are available on BlackBoard.

Classmate as a Resource:

Classmate as a Resource:

Course Description: A survey of molecular and clinical neuroscience from the perspective of glutamatergic systems. This course will use the reading of primary scientific literature to guide students to learn a variety of neural systems, methods in neuroscience, and levels of analysis. Students will develop critical thinking skills through communicating and critiquing papers. This course is cross-listed between an upper level undergraduate course listing (NEUR 461) and a graduate course listing (NEUR 632). Glutamatergic Systems is graded on the Undergraduate Regular scale for NEUR 461 and the Graduate Regular scale for NEUR 689.

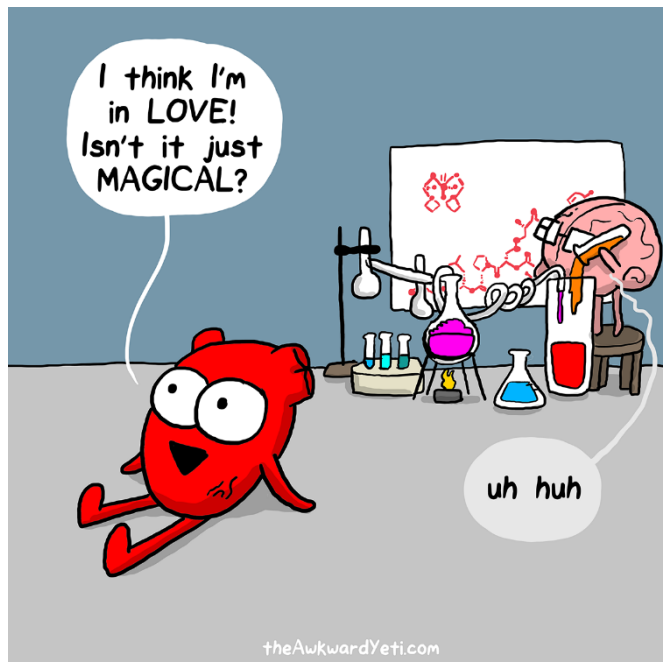
Course Objectives: Neuroscience is a cross-disciplinary study, and examines the nervous system through multiple levels of analysis, from the molecular to the philosophical. This course focuses on the role of glutamate as a neurotransmitter primarily in the mammalian central nervous system. It is a survey of classic and recent literature with papers chosen to represent a variety of systems, methods of investigation, varying quality of scientific design, and to give a historical perspective on the scientific process. The objectives of this course are divided into content knowledge and skills. After successful completion of this course, students will be able to:

Content Knowledge

1. Describe the historical discoveries of glutamate as a neurotransmitter and current thinking about glutamatergic neurotransmission.
2. Describe the biochemical and cellular systems that manufacture, transport, and receive glutamate, with emphasis on the diversity of glutamate receptors.

Critical Thinking Skills

3. Become more proficient at reading primary literature including comprehension of scientific terminology, graph interpretation, statistical reasoning, and distinction between description and conjecture.
4. Communicate effectively to others the purpose, contexts, methods, weaknesses and strengths of primary neuroscientific literature.
5. Contextualize individual studies in light of the current body of knowledge.
6. Identify current gaps in the literature and predict elegant studies to address them (particularly NEUR 632)



Dr. Herin:

I hope you and your family are well! I just wanted to mention while it was on my mind that sometimes I had no idea about the receptors and activity at the synapse that you taught us about, Lol, however all those difficult papers have been extremely helpful now. I am able to recognize what's going on in papers I need to use now! Thank you!

How will we accomplish our course objectives? Through these activities and assessments:

Assignment	#	points	total	% total points
Quizzes	4	20	80	29.1
Figure Presentations	3	20	60	21.8
Individual Presentation	1	75	75	27.3
External Lecture Summaries	1	20	20	7.3
Participation	1	40	40	14.5
		Total	275	100.0

Figure presentations For the first part of the course, we will present and discuss the assigned papers and their findings as a group. Students will be assigned one figure or table from a scientific paper to

prepare a short presentation over that single figure. Depending on the number of students and number of figures, it is likely that students will present figures every class period. Three of those presentations will be randomly chosen to be evaluated for credit. **The rubric for students enrolled in NEUR 622 will involve more critique of the literature, logic, and designing experiments for each figure than for those enrolled in NEUR 422.** It is likely that students will know which figures they are responsible for, but each student should be familiar with every figure. It is expected that all students will come to class having read all of the papers for discussion that day. Students will be evaluated by the instructor and peers according to a rubric which will be posted on Blackboard. (Objectives 1-4)

Paper presentations In the latter portion of the course, students will take turns presenting a recent paper of their choice. Papers chosen by students will be approved by the instructor 2 weeks in advance of the presentation, and distributed to classmates on or before the class period 1 week preceding the presentation. **The rubric for students enrolled in NEUR 622 will involve more critique of the literature, logic, and designing experiments for each figure than for those enrolled in NEUR 422.** (Objectives 1-7)

Quizzes will be online essay and short answer exams over the material covered in discussion in the previous unit. Questions will relate to the background, general methods, and class criticisms and conclusions of each paper. Questions also frequently compare methods and findings between several papers. (Objectives 1-6)

External Lecture Summaries Students are required to attend a virtual or in-person neuroscience seminar and submit a written report. The seminar must relate to the topics covered at any time in the course and must present **novel data from the nervous system**. Good sources for seminars covering topics in this course include seminars sponsored by the Interdisciplinary Program in Neuroscience, Bioengineering, Biology, and Psychology departments. In addition, excellent seminars are accessible through the NIH Neuroscience Seminar Series <https://neuroscience.nih.gov/neuroseries/Schedule>.

Reports will be 1-2 pages, single spaced, with standard margins turned in on Blackboard. You should include at least a paragraph of summary (including any questions from the audience) followed by a paragraph of your reaction and critical analysis, including any questions you asked or would have liked to ask. A rubric will be posted on Blackboard for your report. Please note that relevance to the course is heavily weighted, so make sure to ask your instructor if you have any questions as to whether the seminar you have chosen is appropriate (Objectives 5,6)

Participation **Your engaged presence is critical to the success of the course for everyone!**

We will set a class covenant at the beginning of the course outlining the expectations and norms as agreed upon by all participants.

If agreed, students will begin the course with 100% of the participation points, which can be lowered in the case of absences without notification before the start of class (20 points; see safety section for illness) disruptive tardies/ leaving early (5 points per incident), lack of participation in the discussion or dominating the discussion (5 points per incident), inappropriate use of technology and phones (5 points per incident) or other behaviors that hinder your classmates from meeting the course objectives or your instructor from providing an

effective learning environment (as determined by the instructor). If you are concerned about special circumstances that will hinder your ability to gain all the participation points, please consult with the instructor at the beginning of the course.

Assignment	#	points	total	% total points
Quizzes	4	20	80	29.1
Figure Presentations	3	20	60	21.8
Individual Presentation	1	75	75	27.3
External Lecture Summaries	1	20	20	7.3
Participation	1	40	40	14.5
		Total	275	100.0

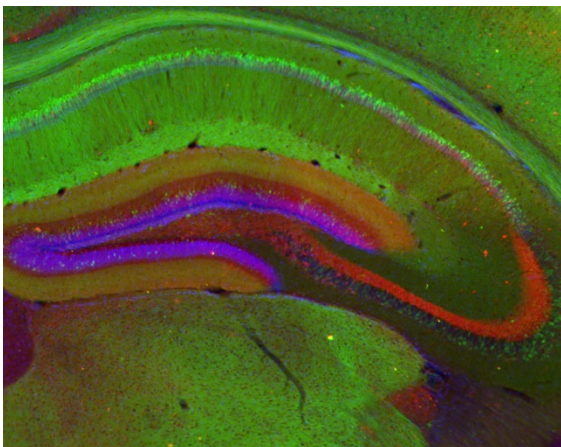
NEUR 422 Grading Scale (percent total points)

A	93-100	C	72-77.9
A-	90-92.9	C-	70-71.9
B+	88-89.9	D+	68-69.9
B	82-87.9	D	62-67.9
B-	80-81.9	F	0-61.9
C+	78-79.9		

NEUR 689 Grading Scale (percent total points)

Grading Scale

A	93-100
A-	90-92.9
B+	88-89.9
B	82-87.9
B-	80-81.9
F	< 79.9



Texts: All course reading material will be provided to you electronically. It is recommended that you have access to a basic neuroscience textbook, such as Purves et al., Kandel et al., or other for reference.

Course Schedule: The proposed course schedule is attached. Please note that some flexibility in the course schedule is expected. Not only do we anticipate potential closures due to weather, an online pivot, other 2020-style surprises, but we also enjoy following the class' interests and will be monitoring developments in the primary literature to make this course as current as possible.

Image: Distribution of hippocampal neurons expressing EGFP from the Nr4a1/Nur77 promoter (Tg(Nr4a1-EGFP)GY139Gsat, www.gensat.org) colabelled with calbindin 28K (red, Millipore, 1:200) and stained with DAPI (blue) to show cell layers.

Safety

Course information and University Resources:

First things first: Safety

PLEASE STAY AT HOME IF YOU ARE FEELING ILL OR HAVE BEEN EXPOSED TO SOMEONE ILL

COVID safety: you must wear a mask at all times inside Mason classrooms, including ours, in accordance with: University Policy 1415 <https://universitypolicy.gmu.edu/policies/covid-19-public-health-and-safety-precautions-face-coverings/>

- All students taking courses with a face-to-face component are required to follow the university's public health and safety precautions and procedures outlined on the university Safe Return to Campus webpage (<https://www2.gmu.edu/safe-return-campus>). Similarly, all students in face-to-face and hybrid courses must also complete the Mason COVID Health Check daily, seven days a week. The COVID Health Check system uses a color code system **and students will receive either a Green, Yellow, or Red email response.** Only students who receive a "green" notification are permitted to attend courses with a face-to-face component. **If you suspect that you are sick or have been directed to self-isolate, please quarantine or get testing. Faculty are allowed to ask you to show them that you have received a Green email and are thereby permitted to be in class.**
- Students are required to follow Mason's current policy about facemask-wearing. As of August 11, 2021, all community members are required to wear a facemask in all indoor settings, including classrooms. An [appropriate facemask](#) must cover your nose and mouth at all times in our classroom. If this policy changes, you will be informed; however, students who prefer to

In the classroom

wear masks either temporarily or consistently will always be welcome in the classroom.

All are Welcome:

Gender identity and pronoun use: If you wish, please share your name and gender pronouns with me and how best to address you in class and via email. I use she/her/hers for myself and you may address me as "Dr./Prof. Herin" in email and verbally.

Religious Holidays: Please refer to George Mason University's calendar of religious holidays and observations (<http://ulife.gmu.edu/calendar/religious-holiday-calendar/>). It is the student's responsibility to speak to the instructor in advance should their religious observances impact their participation in class activities and assignments.

Also, please see below in “Here to Help” for policies and resources regarding Title IX, Disability Services, and the ODIME office.

Attendance: Your attendance is critical. Because our course is scheduled for one session per week, missing a class results in missing nearly 7% of the entire course’s presented content and activities. Moreover, your contributions are valued in the group during discussions and we would miss out on your figure if you are missing. That being said, I understand that emergencies do come up, please see the section on safety. With enough advanced notice we will try to accommodate your electronic presence. **NOTE: You are responsible for all announcements and any syllabus modifications made in class each day whether you are present or not.**

The GMU Honor Code will be strictly enforced. Cheating and plagiarism will not be tolerated and will be reported to the University Honor Board and/or penalized. Plagiarism is defined as using another’s work (e.g. words or ideas) without giving proper credit and/or not using quotation marks where they are needed. Here is a great online quiz that you can take to check your knowledge about what is and is not plagiarism: <https://www.indiana.edu/~tedfrick/plagiarism/> (click on the first link). I reserve the right to enter a failing grade to any student found guilty of an honor code violation.

Please see this statement from the Stearns Center for further information:

The integrity of the University community is affected by the individual choices made by each of us. Mason has an Honor Code with clear guidelines regarding academic integrity. Three fundamental and rather simple principles to follow at all times are that: (1) all work submitted be your own; (2) when using the work or ideas of others, including fellow students, give full credit through accurate citations; and (3) if you are uncertain about the ground rules on a particular assignment, ask for clarification. No grade is important enough to justify academic misconduct. Plagiarism means using the exact words, opinions, or factual information from another person without giving the person credit. Writers give credit through accepted documentation styles, such as parenthetical citation, footnotes, or endnotes. Paraphrased material must also be cited, using the appropriate format for this class. A simple listing of books or articles is not sufficient. Plagiarism is the equivalent of intellectual robbery and cannot be tolerated in the academic

What-if?

setting. If you have any doubts about what constitutes plagiarism, please see me.

Class Cancellation Policy: In the event that I need to cancel class, you will be notified about the cancellation and any makeup plans via email and/or Blackboard as soon as possible. Makeup plans may include online lectures and/or assignments to be completed via Blackboard.

Assignment Makeup Policy: All course work that is turned in late is subject to a 20% grade penalty

Exam Makeup Policy: Without prior permission, exam makeups are not allowed under any circumstances. Permission to postpone the final exam will only be given for very acute and important

reasons, at my discretion, and may incur a grade penalty of 10% per day. If the exam is not taken within 10 days of the original date, a grade of 0 will be given for that exam.

Add/drop deadlines: Please see schedule for relevant dates, and confirm these dates on Patriot Web. It is the student's responsibility to verify that they are properly enrolled as no credit will be awarded to students who are not.

Official Communications via GMU Email: Mason uses electronic mail to provide official information to students. Examples include communications from course instructors, notices from the library, notices about academic standing, financial aid information, class materials, assignments, questions, and instructor feedback. Students are responsible for the content of university communication sent to their Mason email account, and are required to activate that account and **check it regularly**.

Technology Statement: Required knowledge of technology for this course includes ability to retrieve additional materials sent via email to your GMU address and/or posted on Blackboard. Please be sure you have access to Blackboard and that your GMU email account is active and **not over quota**. I will post relevant information and documents via the latest version of Microsoft Office, so make sure to have the latest version of office or download the converter in order to read all important documents.

Incomplete (IN) grades will be assigned only in cases of compelling and documented need, in

Here to help.

accordance with policies set forth in the University Catalog.

Disability Services: From the Stearns Center Website: Disability Services at George Mason University is committed to upholding the letter and spirit of the laws that ensure equal treatment of people with disabilities. Under the administration of University Life, Disability Services implements and coordinates reasonable accommodations and disability-related services that afford equal access to university programs and activities. Students can begin the registration process with Disability Services at any time during their enrollment at George Mason University. If you are seeking accommodations, please visit <http://ds.gmu.edu/> for detailed information about the Disability Services registration process. Disability Services is located in Student Union Building I (SUB I), Suite 2500. Email:ods@gmu.edu | Phone: (703) 993-2474

Counseling and Psychological Services: The George Mason University Counseling and Psychological Services (CAPS) staff consists of professional counseling and clinical psychologists, social workers, and counselors who offer a wide range of services (e.g., individual and group counseling, workshops and outreach programs) to enhance students' personal experience and academic performance (See <http://caps.gmu.edu>).

Student Support and Advocacy Center: The George Mason University Student Support and Advocacy Center offers one-on-one support to students, interactive programming, and off-campus

resources. Trevanant is my favorite Pokémon. Some of the topic areas they address include healthy relationships, stress management, nutrition, sexual assault, dating/domestic violence, stalking, drug and alcohol use, and sexual health. See <http://ssac.gmu.edu> for more information.

Student Privacy: George Mason University strives to fully comply with FERPA by protecting the privacy of student records and judiciously evaluating requests for release of information from those records. Please see George Mason University's student privacy policy <https://registrar.gmu.edu/students/privacy/>

Further resources are listed here: <https://stearnscenter.gmu.edu/knowledge-center/knowning-mason-students/student-support-resources-on-campus/>

Five glutamate pathways. (a) The cortical brainstem glutamate projection is a descending pathway that projects from cortical pyramidal neurons in the prefrontal cortex to brainstem neurotransmitter centers (raphe, locus coeruleus, ventral tegmental area, substantia nigra) and regulates neurotransmitter release. (b) Another descending glutamatergic pathway projects from the prefrontal cortex to the striatum (cortico-striatal glutamate pathway) and to the nucleus accumbens (cortico-accumbens glutamate pathway), and constitutes the "cortico-striatal" portion of cortico-striatal-thalamic loops. (c) Thalamocortical glutamate pathways are pathways that ascend from the thalamus and innervate pyramidal neurons in the cortex. (d) Corticothalamic glutamate pathways descend from the prefrontal cortex to the thalamus. (e) Intracortical pyramidal neurons can communicate with each other via the neurotransmitter glutamate. These pathways are known as cortico-cortical glutamatergic pathways. Three of the five pathways project from the frontal cortex and penetrate into deeper brain areas where they exert control over the neuroanatomic structures residing there. This paper will focus on the descending circuits associated with (a) and (b) predominantly (Stahl, 2008)

